



# DIESEL FIRED PORTABLE HEATER

## B 70 CED

Easy to move

Durable, solid construction

Stainless steel combustion chamber

Electronic flame control

High air displacement

Two fuel filters to ensure longevity

19L Fuel tank with level indicator



Specifications	Units	B 70 CED
Heating power	kW	20
Air flow	Btu/h	68,300
Fuel autonomy	m <sup>3</sup> /h	400
Tank capacity	h	10
Product size (l x w x h)	l	19
Net/gross weight	mm	745 x 300 x 405
	kg	15/18

### Heatrooms Quickly and Easily

- 20kW Heating power for up to 185m<sup>2</sup>

### High Efficiency

- 1.9L/hr Fuel consumption

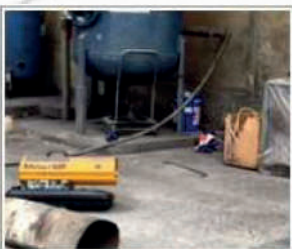
### Precise Temperature Control

- Optional room thermostat available for easy temperature control

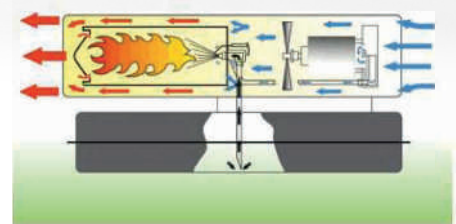
### Safe

- Thermally protected motor

### Applications



### How it works



warehouses | workshops | building locations | renovations | agriculture

Combustion system - air flow